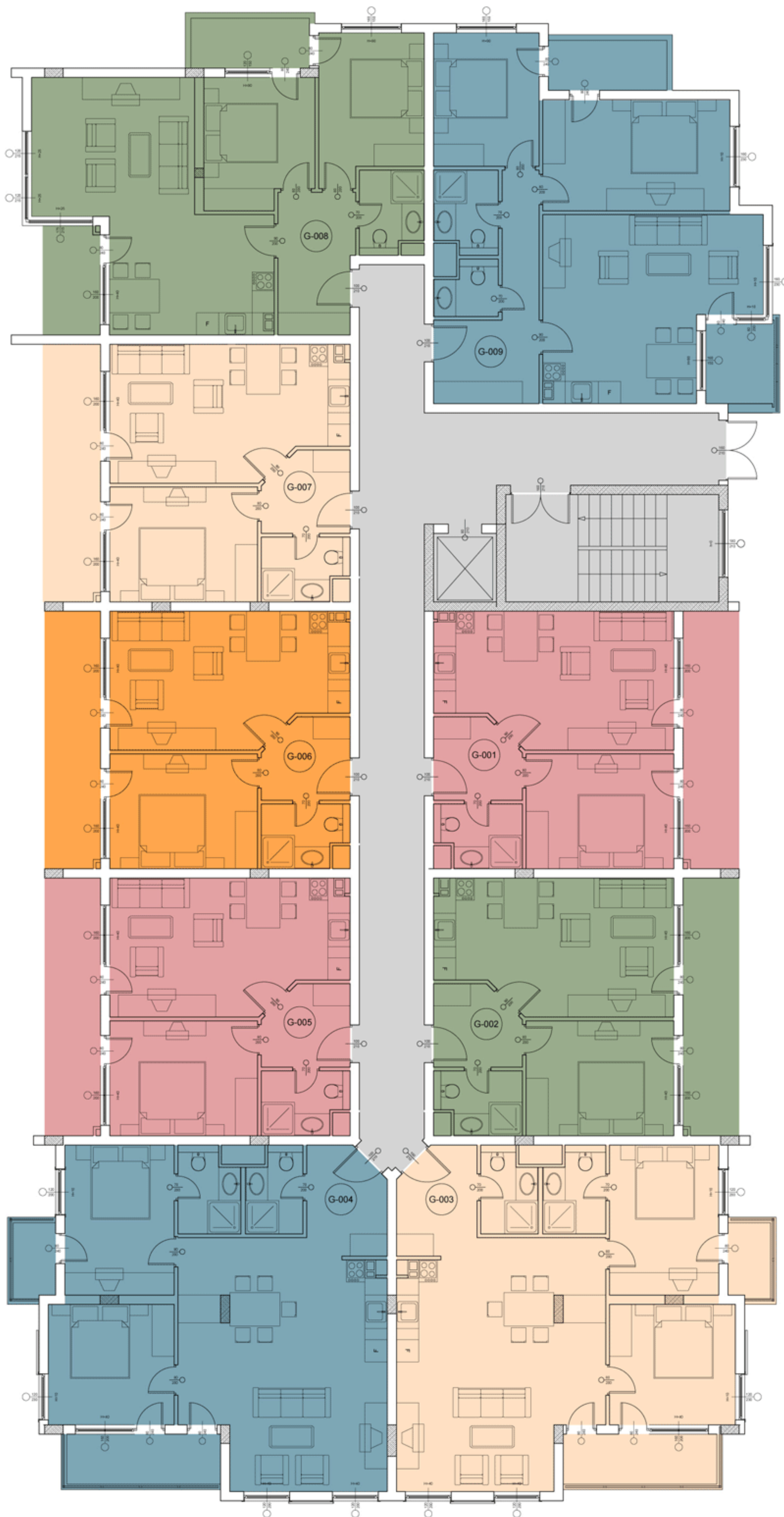


SECTION "G"



GROUND FLOOR

	neto m2	bruto m2
G-001	60.66	69.47
G-002	60.66	69.47
G-003	90.82	104.02
G-004	90.82	104.02
G-005	60.66	69.47
G-006	60.66	69.47
G-007	60.66	69.47
G-008	83.34	95.45
G-009	88.25	101.07